

## Installation Procedure

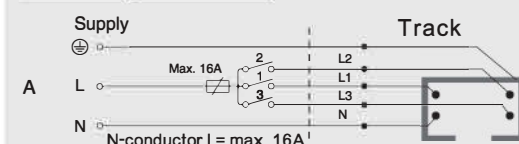
### WARNING

1. Switch off before installation.
2. Switch on only after complete installation and examination of the circuit.
3. Professional electrician for installation and maintenance only.

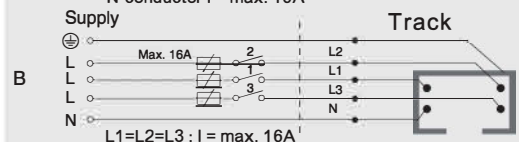


## Wiring Diagram (Please select according to the actual product)

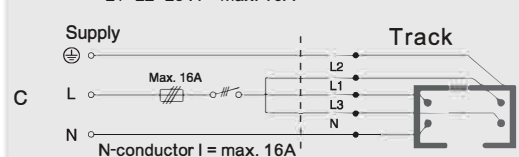
### 4-wires, 3-circuit



1-phase, 3-circuit,  
230V AC,  
16A, 3.7kVA

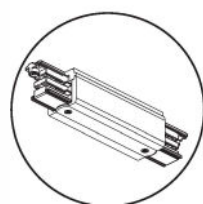
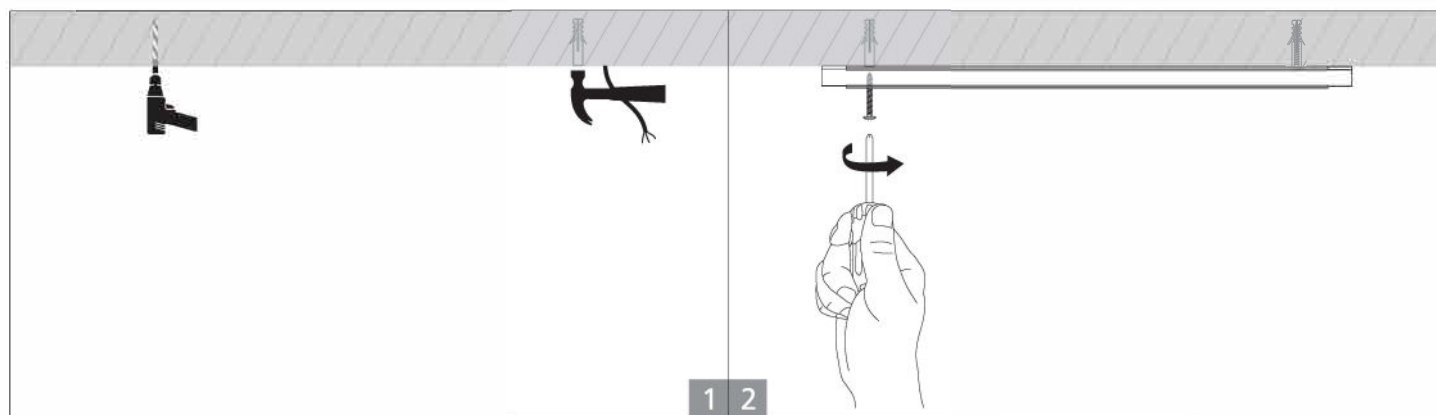


3-phase, 3-circuit,  
230/400V AC,  
16A, 3x3.7kVA

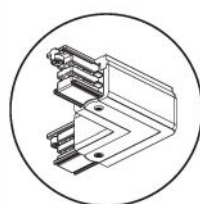


3-phase, 3-circuit,  
230/400V AC,  
16A, 11.1kVA

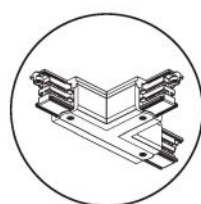
## Installation for track



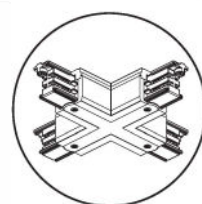
Straight "-"



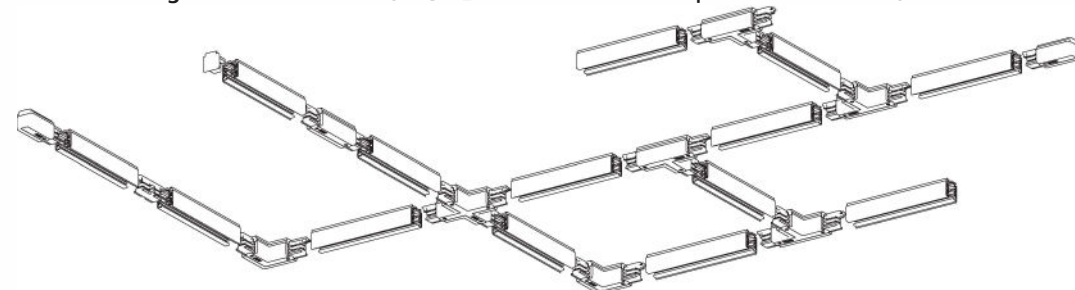
Corner "L"



"T" shape



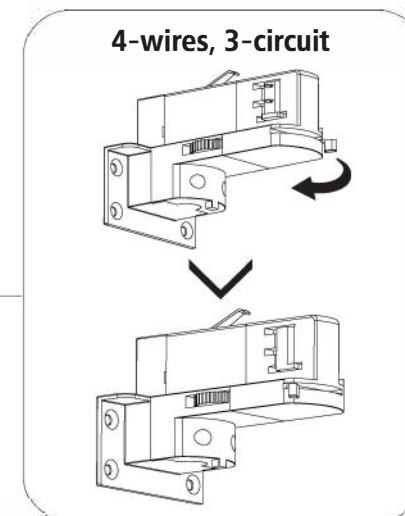
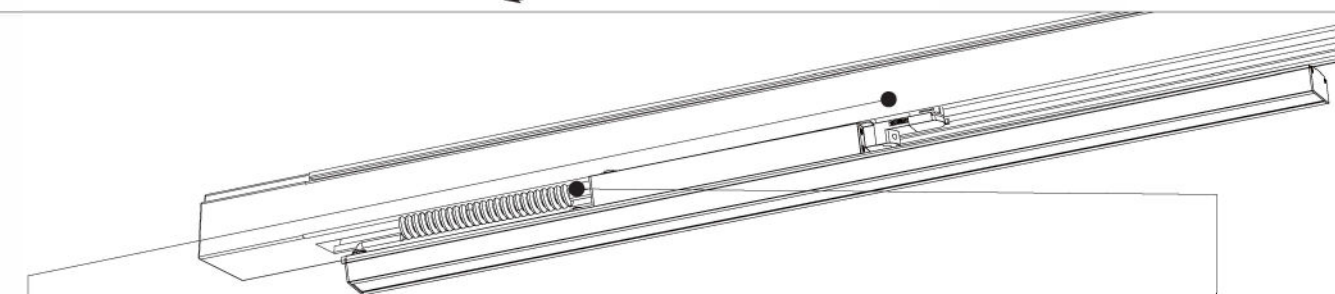
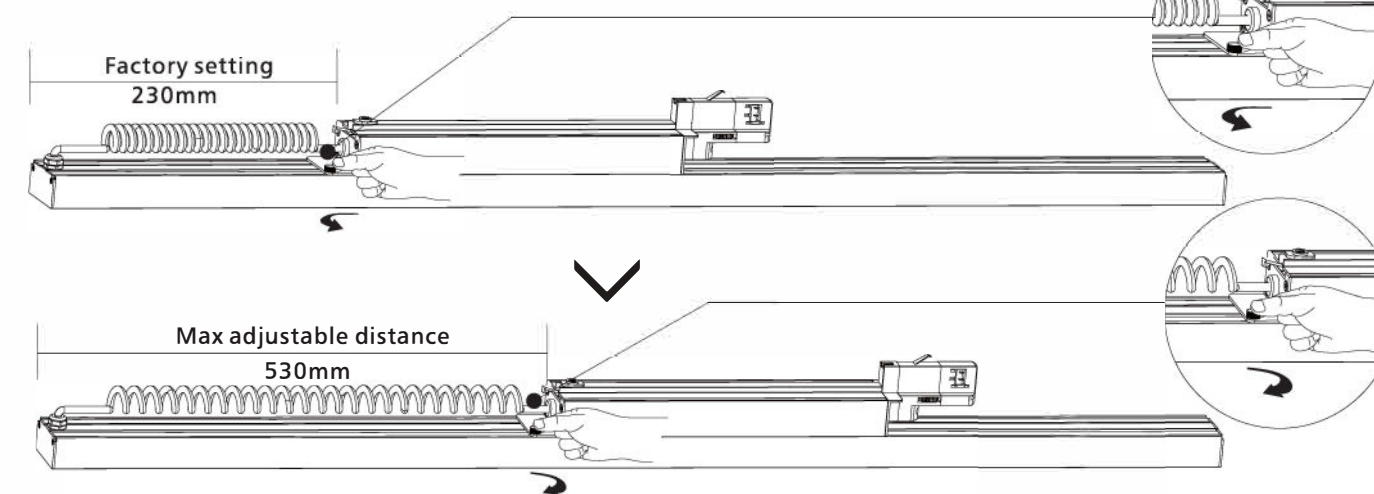
Cross "+"



Note: Do not install in the place near heat source, or in corrosive gas environment.

## Installation

Unscrew the screw to adjust driver box position, then lock the screw.



4-wires, 3-circuit

