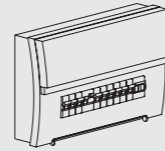


Installation Procedure

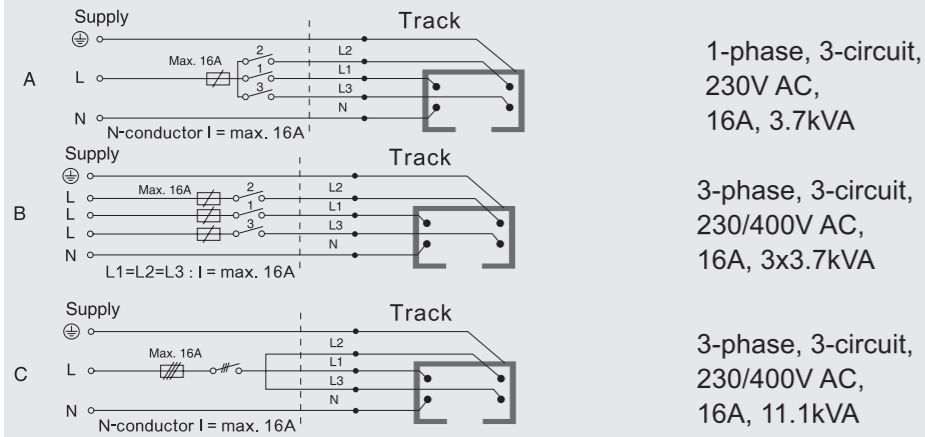
WARNING

1. Switch off before installation.
2. Switch on only after complete installation and examination of the circuit.
3. Professional electrician for installation and maintenance only.

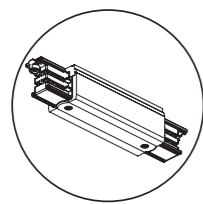
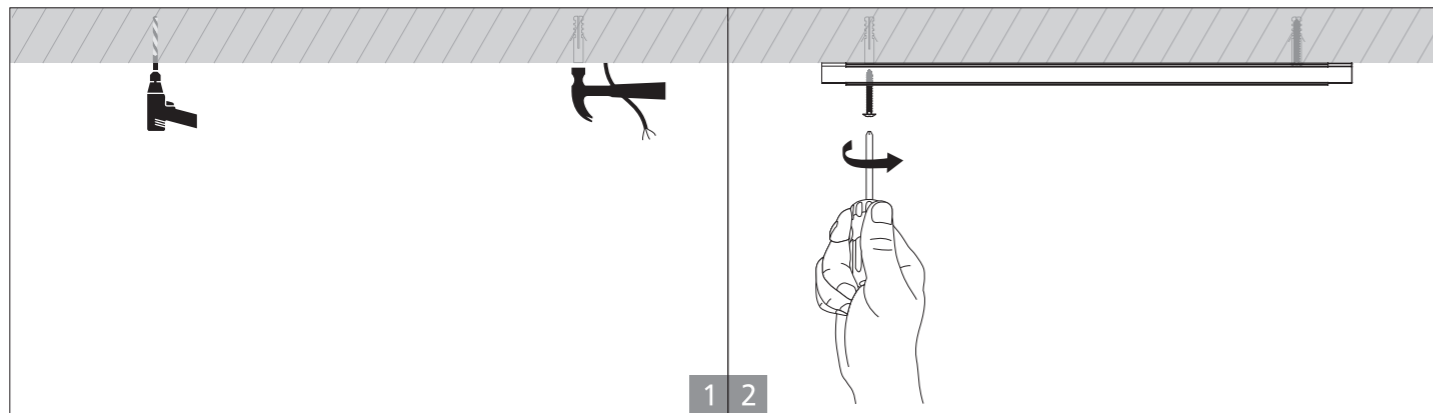


Wiring Diagram (Please select according to the actual product)

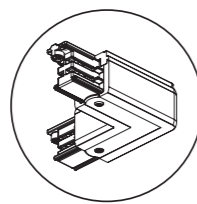
4-wires, 3-circuit



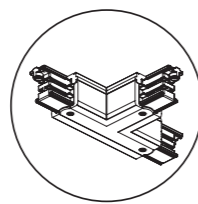
Installation for track



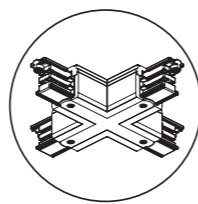
Straight "—"



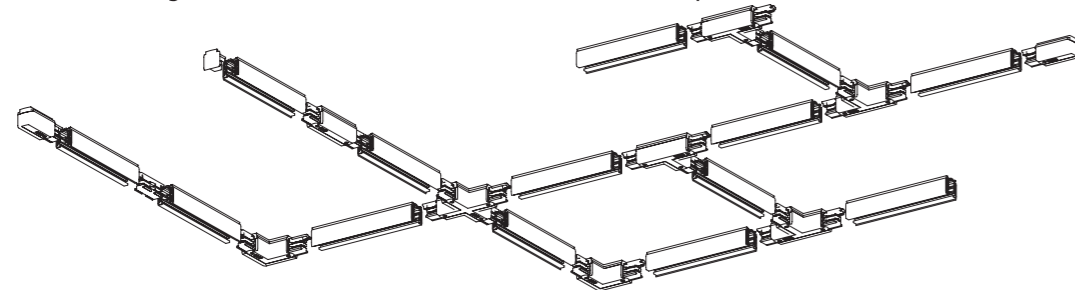
Corner "L"



"T" shape



Cross "+"



Note: Do not install in the place near heat source, or in corrosive gas environment.

Installation

Unscrew the screw to adjust driver box position, then lock the screw.

Factory setting

230mm

Max adjustable distance

530mm

